

Cycle Report

April 13, 2025

Welcome to the April 13, 2025 issue of the *Cycle Report*. In this issue, I want to continue my departure from the normal Periodogram examination of cycles and show you how *Bayer's Rule #41* can be used to help you discern trend changes on daily charts.

Bayer's Rule #41 says that Mercury (the smallest of the planets) has a variable speed of orbit as it travels around the Sun in 116 days (as observed from our vantage point here on Earth). Bayer also noted that the Sun (even though it is just a ball of burning gas) has motion associated with it (it moves relative to the center of the Milky Way galaxy). Bayer said that as Mercury picks up speed in its cyclical 116-day movement, there will be a brief time when its orbital speed matches that of the Sun. It is at these times when there is an increased likelihood of a price trend change.

In this issue, I show you an array of charts ranging from gold to agriculture commodities to major indices. On each chart I show the dominant daily cycle as calculated by the Periodogram algorithm. In the lower pane of each chart, I show a plot of geocentric Mercury's speed. I have added a dashed red line on this plot to illustrate the Sun's speed. As the speed of Mercury comes up and through the "zero" line and intersects the dashed red line, I have added a pink arrow to the price chart at this date. You will notice that some charts respond very well to *Bayer's Rule #41*.

You will notice that when a pink arrow event *closely* aligns to a cyclical event (or the mid-point of a cyclical event), the result is remarkable.

As always, any of these Bayer's Rules have to be used with some sort of a chart trend indicator (Slow Stochastic, MAC-D etc...).

The next Mercury speed/Sun speed crossover will be around **August 13-14, 2025**.

I do hope this information will expand your knowledge....

GOLD



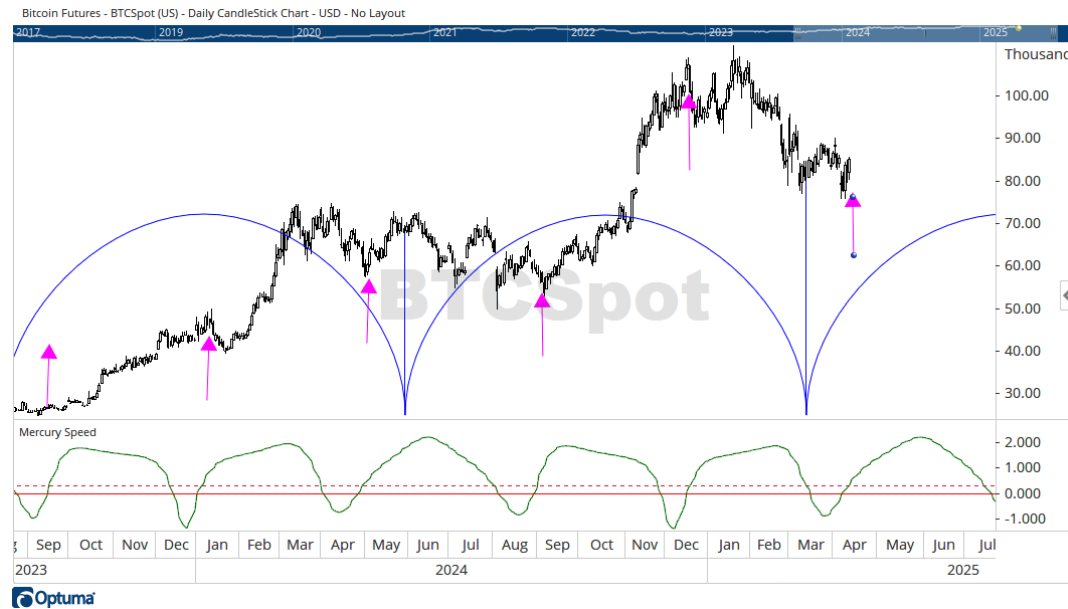
Gold has a 40-bar cycle on the daily chart. The pink arrows overlaid depict the Mercury speed=Sun speed events.

COPPER



Copper has a 60-bar cycle on the daily chart. The pink arrows overlaid depict the Mercury speed=Sun speed events.

BITCOIN Futures



Bitcoin futures function on a 198-bar cycle on the daily chart.

The pink arrows overlaid depict the Mercury speed=Sun speed events.

US Dollar Index



The US Dollar Index has a 2nd harmonic 280-bar cycle pattern on the daily chart.

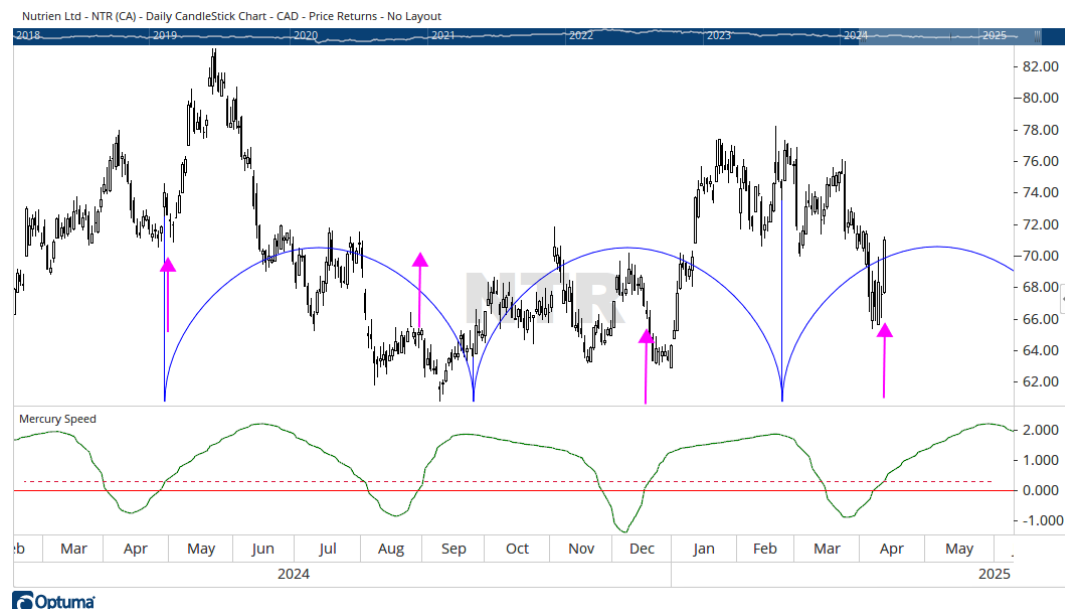
The pink arrows overlaid depict the Mercury speed=Sun speed events.

WTI Crude Oil



WTI Crude Oil functions according to events of Sun (and Mars) passing Node, Saturn, Neptune, and Mars in the 1983 first trade horoscope. The pink arrows overlaid depict the Mercury speed=Sun speed events. Powerful rallies can happen when Mercury/Sun speed events overlap with the Sun/natal chart transits. One such overlap is about to occur in the coming days.

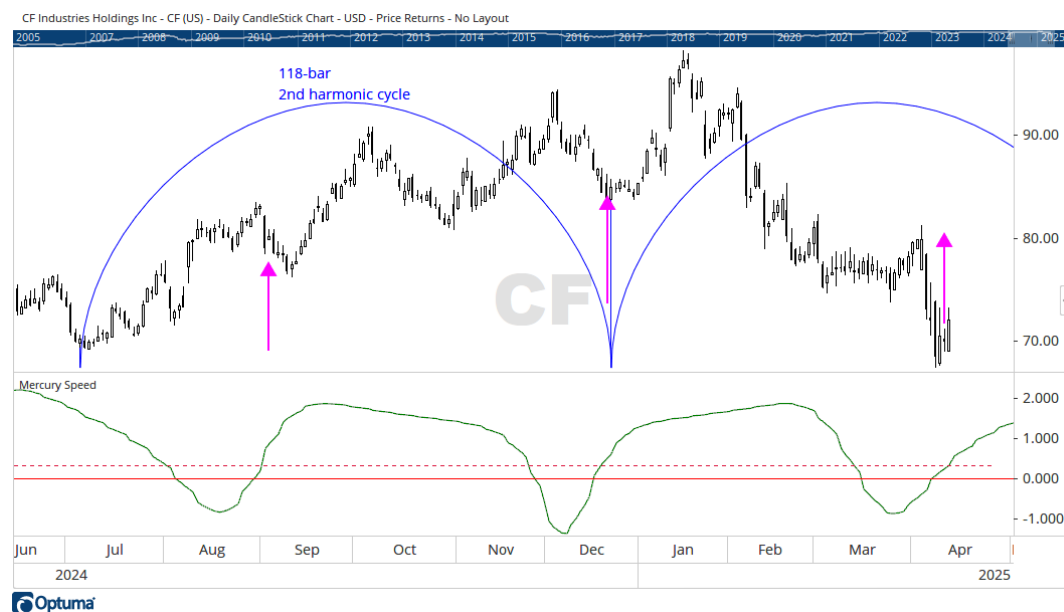
Nutrien (TSX:NTR) as a proxy for potash fertilizer



Nutrien shares have a 3rd harmonic 103-bar cycle pattern on the daily chart.

The pink arrows overlaid depict the Mercury speed=Sun speed events.

CF Industries (N:CF) as a proxy for Nitrogen fertilizer



CF Industries shares have a 2nd harmonic 118-bar cycle pattern on the daily chart.

The pink arrows overlaid depict the Mercury speed=Sun speed events.

Canadian Dollar



The Canadian \$ functions on a 10th harmonic 270-bar cycle on the daily chart.

The pink arrows overlaid depict the Mercury speed=Sun speed events.

Australian \$



The Aussie \$ functions on a 10th harmonic 275-bar cycle on the daily chart.

The pink arrows overlaid depict the Mercury speed=Sun speed events.

British Pound



The British Pound functions on a 12th harmonic 255-bar cycle on the daily chart.

The pink arrows overlaid depict the Mercury speed=Sun speed events.

Live Cattle



Live Cattle futures function on a 3rd harmonic 110-bar cycle on the daily chart.

The pink arrows overlaid depict the Mercury speed=Sun speed events.

Lean Hogs



Lean Hog futures function on a 3rd harmonic 142-bar cycle on the daily chart.

The pink arrows overlaid depict the Mercury speed=Sun speed events.

Wheat



Wheat futures function on a 4th harmonic 63-bar cycle on the daily chart.

The pink arrows overlaid depict the Mercury speed=Sun speed events.

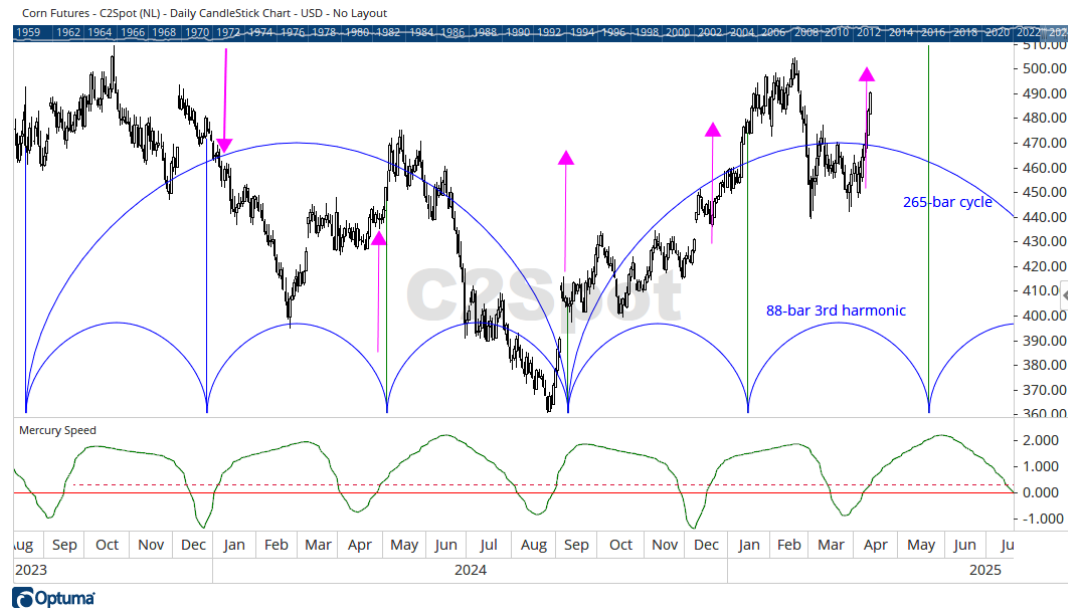
Soybeans



Soybean futures function on a 163-bar cycle on the daily chart.

The pink arrows overlaid depict the Mercury speed=Sun speed events.

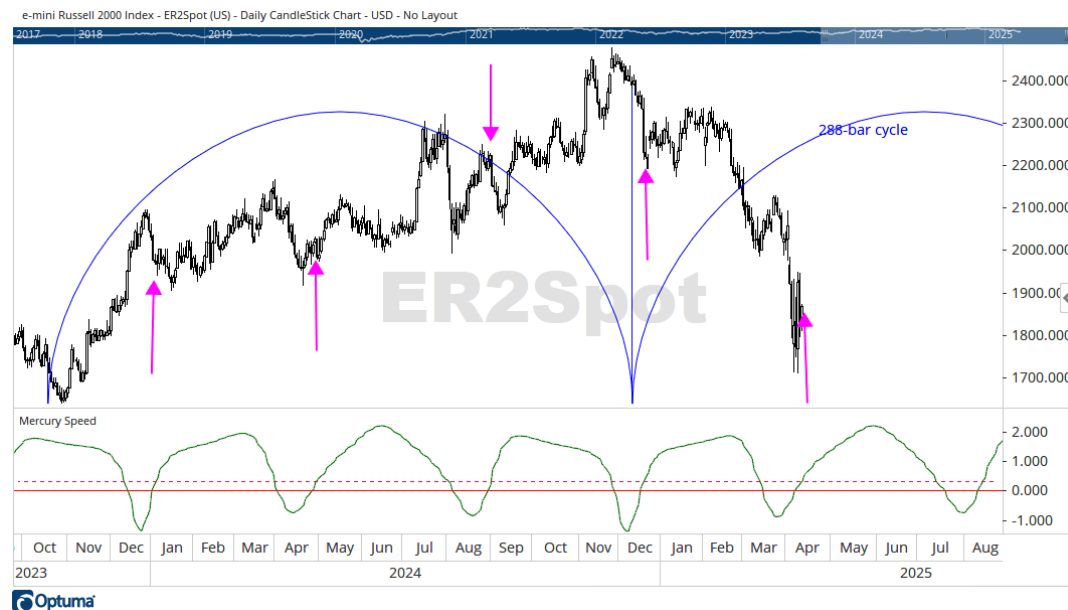
CORN



Corn futures function on an 88-bar 3rd harmonic cycle on the daily chart.

The pink arrows overlaid depict the Mercury speed=Sun speed events.

Russell 2000 Small Cap



e-mini Russell 2000 futures function on a 288-bar cycle on the daily chart.

The pink arrows overlaid depict the Mercury speed=Sun speed events.

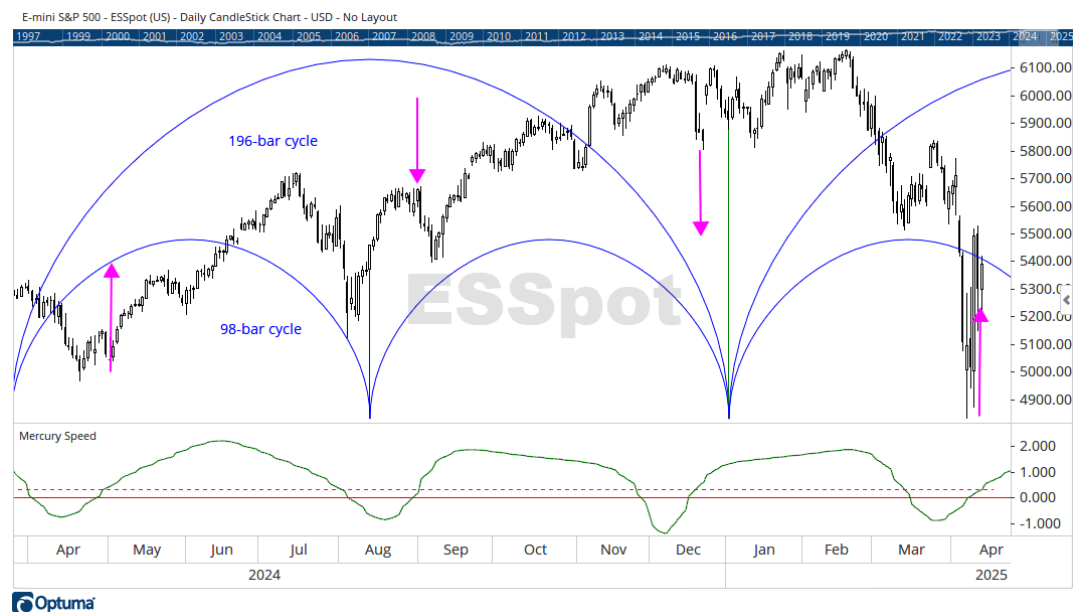
Nasdaq



e-mini Nasdaq futures function on a 203-bar, 6th harmonic cycle on the daily chart.

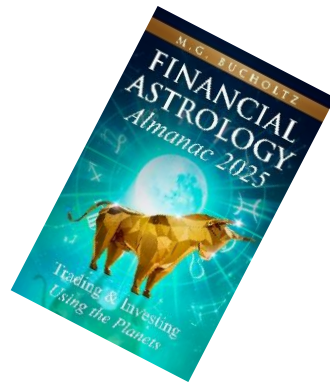
The pink arrows overlaid depict the Mercury speed=Sun speed events.

S&P 500



e-mini S&P 500 futures function on a 98-bar, 2nd harmonic cycle on the daily chart.

The pink arrows overlaid depict the Mercury speed=Sun speed events.



2025 Almanac is now on Amazon in paperback and E-book format.

The Cycle Report is provided to subscribers on a **twice-monthly** basis (at a minimum). All rights reserved. Please respect the intellectual property of the author. No part of any Cycle Report may be reproduced by any graphic, electronic or mechanical means without the express written consent of the author, except in the case of brief quotations required for critical articles and reviews. The information and ideas presented in the Cycle Report are not intended to render professional advice. The author is not liable in any way for loss arising as a consequence of the information expressed in any Cycle Report. Subscribers must be mindful of their risk tolerance and should ideally seek professional investing advice before trading or investing on the financial markets.